

Principal applications

For applications requiring safe, leak-free continuous flow of aggressive chemicals, acids, alkalis, sterile & chilled fluids.

Wetted materials

- Standard EPDM 'O' ring, optional Nitrile or Viton
- PP encapsulated magnet
- PPS spindle housing
- PP pump body
- Alumina ceramic spindle

Features

- Manufactured in chemical resistant thermoplastics - entirely non-metallic
- Magnetic couplings provide an energy efficient thermal shield, minimising heat transfer to pumped fluids.
- IP 54 motor housing standard
- Deep groove ball bearings

NEMP 25/5
230V 1ph 50Hz
230V 1ph 60Hz

Port Details
Plain 15mm
Plain 15mm

NEMP25/5
110V 1ph 50Hz
110V 1ph 60Hz

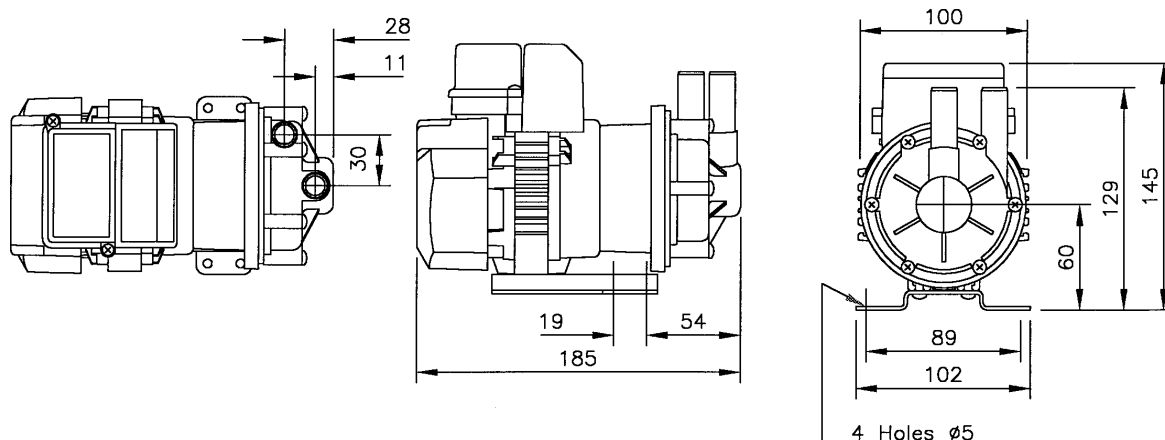
Port Details
Plain 15mm
Plain 15mm

16.5mm ports option



Drawings not to scale
 Dimensions in millimetres

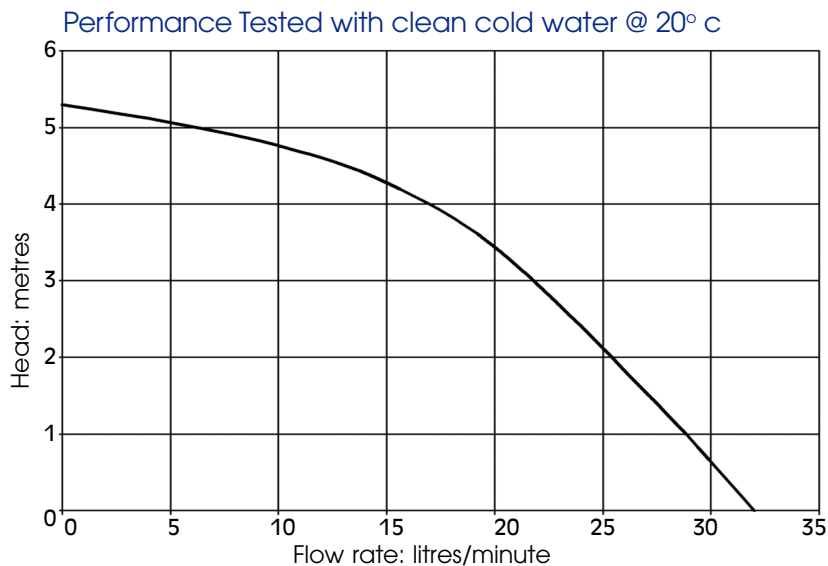
NEMP 25/5



Specification

Model	Overall height mm	Overall length mm	Overall width mm	Weight kilos	Max body pressure bar	Max capacity litres/min	Max head metres	Temp range °c	*Max specific gravity	Motor output Watts
NEMP 25/5	145	185	102	2.4	1.4	32	5.3	-20° to +85°	1.2	35

*assuming maximum viscosity Of 30cp. Refer to the Company for higher viscosities & specific gravities



NOTE: These magnetically coupled pumps are designed for use with clean fluids. Solids will cause jamming. Abrasives will reduce pump life & invalidate the warranty. NEMP pumps are not self priming & are not designed to run dry

The company reserves the right to change specifications

a division of *the* Electric Motor Company Limited

phone+44 (0)23 8066 6685

fax+44 (0)23 8066 6880

email: info@totton-pumps.com

www. totton-pumps.co.uk